



FUMIGATION AND PEST CONTROL

Our collection of fumigation process

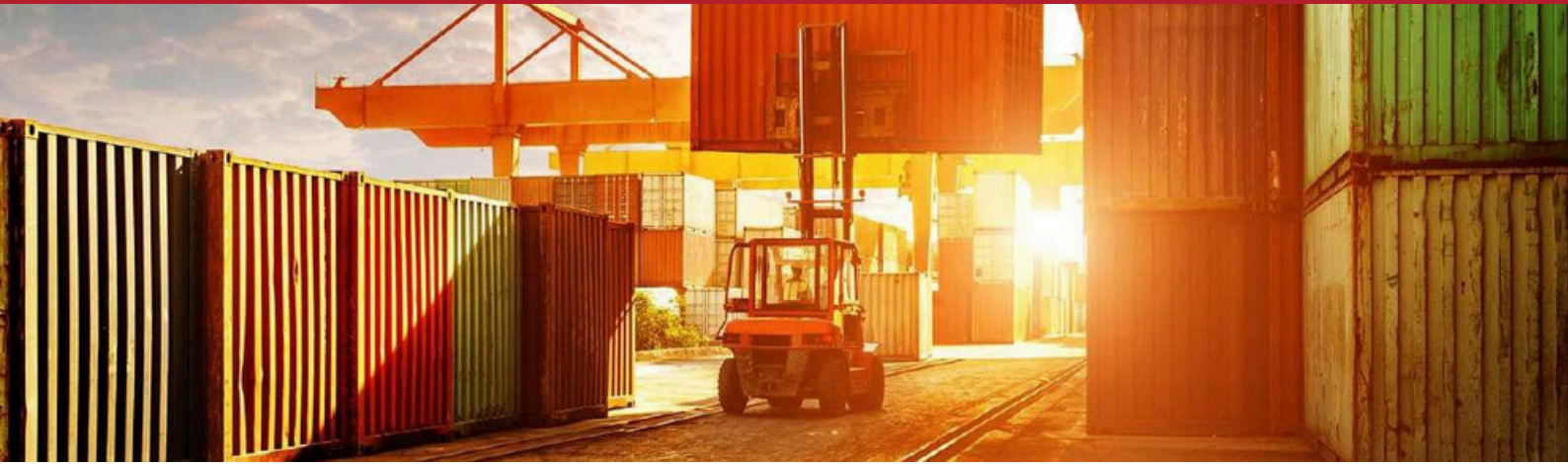
ABOUT US

Misarma Enterprise Sdn. Bhd. (MSM) is a wholly owned and a well-established company since the year 2009. We engage in timber, construction, Marine, and oil and gas related industry. In this ever-evolving industry, Misarma has realized the importance of innovation and improvement. To cope with rapid development and services, Misarma has successfully ventured the business into pest control and fumigation services from timber, building to vessel to satisfy our customers' need.

Misarma specialize in providing full spectrums pest management solutions to a gamut of industries and business. Adhering to global standard and recognized by Jabatan Pertanian Malaysia, we help you get rid of pest menace. With decades of experience, our experts are dept at providing highly cost effective, eco-friendly and noninstructive solutions. Furthermore, our pest control teamis consistently updated with the latest skill and knowledge toensure effectiveness is guaranteed.



PEST MANAGEMENT

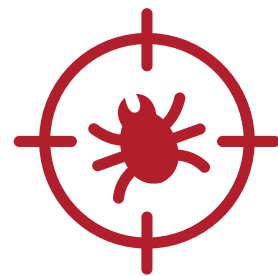


A non-effective fumigation may leave an adverse impact towards the Malaysian export trade by raising doubts about the integrity of Malaysian export agricultural produce. Misarma ensure your goods up to Government export/import with no doubt Custom Clearance. We are also an MAFAS (Malaysia Fumigation Accreditation Scheme), AFAS (Australia Fumigation Accreditation Scheme), ISPM-15 (International Standards for Phytosanitary Measures No.15) accredited fumigation company. Subsequently, we do also provide fumigation and pest control services for warehouses, vessel and storage units, such as grains and furniture storage.



FUMIGATION

Fumigation is a targeted treatment technique that is commonly used by professionals in pest management to effectively control pest that attack stored goods and commodities.



COMMERCIAL PEST CONTROL

Pest control is the process of managing or removing pest from the house or place of business. The goal is to prevent or minimize structural or other damage caused by these pest and reduce the risk of pest spreading a disease or illness to people.

QUARANTINED FUMIGATION

Fumigation is recognized as an effective means of targeted control of Stored Product Insects (SPIs) such as beetles, weevils, mites and moths. It can safeguard businesses such as shipping and cargo, warehousing and agriculture. This ensures that shipments are transported safely and without risk of contamination.

QUARANTINE FUMIGATION



Cover fumigation service involves encasing the product or item with a gas-proof fumigation tarp, with sand placed around all edges to create and maintain a gas seal. This can also be achieved using an airtight tarpaulin sheet to ensure an optimal concentration of methyl bromide gas, thereby making the items completely pest-free. The products are treated with a fumigant under this gas-proof sheeting for a minimum period before they are ventilated.

Our experts are equipped to carry out necessary timber fumigation treatments and provide pre-shipment certificates for the relevant quarantine treatment. We conduct fumigation of wood and timber products under the supervision of appropriate phytosanitary authorities. When fumigating products, we adhere to the proper protocols concerning concentration levels and the selection of fumigants, such as methyl bromide gas or phosphine.

ISPM-15 CERTIFICATION



Wood packaging material that bears the certified stamp mark is compliant with ISPM 15. To ensure adherence to wood packaging material regulations, Misarma provides services in accordance with Regulation 15 of the International Standards for Phytosanitary Measures (ISPM 15). Developed by the International Plant Protection Convention (IPPC), ISPM 15 specifically addresses the treatment of wood materials with a thickness greater than 6 mm used for shipping products between countries. This standard helps prevent the international transportation of diseases and insects that could negatively impact plants and ecosystems.

QUARANTINED FUMIGATION

CONTAINER FUMIGATION



Container fumigation controls any type of pest through an efficient, safe and dry disinfection process, which is usually done by gas. The most commonly used gases in the fumigation process are methyl bromide and phosphine. Although both maintain the same level of effectiveness; methyl bromide is more frequently used in containers. In order to receive the fumigant, the container must have its structures in good condition. The fumigation site must be isolated within a radius of 5 meters, and a sticker containing basic information such as date and time of start and end of treatment should be attached to the container's door.

VESSEL FUMIGATION



Pest infestation is not uncommon on board vessels and ships. It is essential to take charge of the situation to eliminate pests, especially rats, as part of the legal requirements. Before conducting a vessel fumigation, it is necessary to vacate the risk areas and ensure that the effort has been made to seal all openings to prevent the fumigant (Methyl Bromide) from escaping. Re-entry into the fumigation area is only allowed when it has been declared safe and free of gas by the fumigators-in-charge. This is after tests are carried out to confirm the gas concentration level is below OES (Occupational Exposure Standard).

NON QUARANTINED FUMIGATION

Non-quarantine fumigation is conducted in enclosed spaces such as warehouse with goods and commodities being stored. Fumigation is carried out to protect your production goods against the ravages of pests. The space for fumigation relates to warehouses, shop lots or even ships and vessels. Instead of tarp wrapping of goods or commodities, nonquarantine (space) fumigation is done first by ensuring that every possible gap holes of a space are being sealed or filled. The process includes the filling of gaps, releasing of gas in the space and out of the space after a certain period of time.

COMMODITY FUMIGATION

Commodity fumigation is the treatment of a product by gas, chemical or other process to eliminate the risk of a pest infestation. A commodity can be described as anything from grain to personal effects imported or exported from one country to state to another.

Stored products pests are very sturdy and can adapt to almost any condition and location. The infestation can occur at any stage from packaging to transport to storage and shelving. Food pests can be found in all forms: egg, larvae, or pupal and adult form.

Stored product pests not only deteriorate the quality of food but more importantly in the case of heavy infestation can cause skin irritations and both animals and human may suffer intestinal disorders from eating infested foods.



NON QUARANTINED FUMIGATION



GENERAL PEST CONTROL

Having a clean environment for the work space is a must for all corporate premises to ensure a conducive working environment. Most insects do not harm human products nor carry diseases harmful to human. However, some do carry diseases, feed on human food, clothing, housing and manufactured goods. Misarma apply the latest & most effective techniques including spraying of approved chemicals, traps/trays, application of gel baits and other form of baiting systems. We choose the products poses minimal risk and special care and attention are taken to minimize any possible adverse impact to the environment. Our service area includes corporate, commercial and residential clients. We offer general pest control services for the control and elimination of pest such as : rodents, cockroaches, common ants, termites, houseflies, mosquitoes, storage insect pest, bed bug, flea, spider, fly insects and other pests.



DISINFECTION SERVICES



Disinfection is important for keeping properties and the people in them healthy and safety. There are many types of sanitation tools and equipment in the market. Our surface sanitisation solution aims to provide customers a peace of mind. In addition, assurance in terms of safety, efficacy and credibility are our key priorities too.

Checklist for pre- and post-treatment needs In general, we recommend to perform the following before treatment:

1. Clean up the space and ensure clutter is minimal.
2. Store food items or food consumption tools away.
3. Cover well fish tank if there is any.
4. Relocate pets and employees or end users.
5. Protect any essential items that may be valuable or sensitive.

Similarly, after treatment, we encourage customers to comply following:

1. Evacuate and return a range from 2 to 4 hours later.
2. Ventilate the space well.
3. You may clean the place.
3. Lastly, resume activities per normal thereafter.

OUR CLIENTS



OM HOLDINGS LIMITED






**Misarma Enterprise
Sdn Bhd**


OUR LOCATIONS

MIRI

 LOT 2075, JALAN DISA,
KROKOP, 98000 MIRI,
SARAWAK, MALAYSIA

 +6085 416 320

KUALA LUMPUR

 42-03, MENARA THE STRIDE,
JALAN HANG TUAH,
55100 W.P KUALA LUMPUR,
MALAYSIA

 +603 3051 7388

BINTULU

 FACTORY & WAREHOUSE

LOT 1604, 1605 & 1606
BLOCK 26, KEMENA
LAND DISTRICT, JALAN
TUN HUSSEIN ONN,
97000 BINTULU, SARAWAK

FOR FURTHER DETAILS, FEEL FREE TO EMAIL US OR VISIT OUR WEBSITE

 enquiry@misarma.com

 www.misarma.com